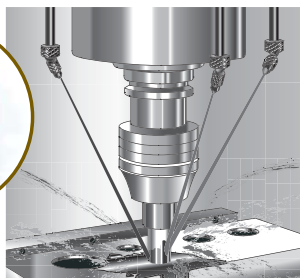


Feature

- Flow rate can be adjusted making it easy to use for the stop valve visceral.
 - There is no involvement of the chip length of the nozzle is short.
 - There is no dripping of the nozzle tip.
 - With lock nut for, I do not vibrate loose.
 - Swing width of the nozzle is larger.
- In addition, the flow rate variation does not happen.



Specification

Standard type

Model	A (m/m)	L (m/m)	T (Pipe thread)	W (m/m)	D (m/m)	S (m/m)	E (m/m)	F (m/m)	G (m/m)	H	Maximum pressure (MPa)	Flow (L/min)/0.1MPa時
AN-2*-0T-90	13	59	R 1/4	19	6 φ	29	7 φ	24	1.8	90°	0.98	6
AN-4*-0T-60	16	71	R 1/2	24	11 φ	37	11 φ	23	3	60°	0.49	30

Short type

Model	A (m/m)	L (m/m)	T (Pipe thread)	W (m/m)	D (m/m)	S (m/m)	E (m/m)	F (m/m)	G (m/m)	H	Maximum pressure (MPa)	Flow (L/min)/0.1MPa時
AN-1*-0T-70S	8	22	R 1/8	13	4 φ	20	4 φ	10.8	0.8	70°	0.98	5
AN-2*-0T-90S	13	40	R 1/4	19	5 φ	29	7 φ	24	1.8	90°	0.98	15
AN-4*-0T-65S	16	58	R 1/2	24	11 φ	37	11 φ	23	3	65°	0.49	45

Type extension pipe

Model	A (m/m)	L (m/m)	T (Pipe thread)	W (m/m)	D (m/m)	S (m/m)	E (m/m)	F (m/m)	G (m/m)	H	Maximum pressure (MPa)	Flow (L/min)/0.1MPa時
AN-2*-0T-90-6P	13	62.5	R 1/4	19	6 φ	29	7 φ	24	3	90°	0.98	8

Injection type fan

Model	A (m/m)	L (m/m)	T (Pipe thread)	W (m/m)	D (m/m)	S (m/m)	E (m/m)	F (m/m)	G (m/m)	H	Maximum pressure (MPa)	Flow (L/min)/0.1MPa時
AN-2*-0T-90-8L	13	54.5	R 1/4	19	5.4 φ	29	7 φ	24	3	90°	0.98	

Open type

Model	A (m/m)	L (m/m)	T (Pipe thread)	W (m/m)	D (m/m)	S (m/m)	E (m/m)	F (m/m)	G (m/m)	H	Maximum pressure (MPa)	Flow (L/min)/0.1MPa時
AN-6Y-0T-50	18	42	R 3/4	27	17 φ	38	18 φ	18.5	3	50°	1.47	70

※ Type checking with C, no check is the type A. Use turbine oil #90

Dimensional diagrams (mm)

Standard type

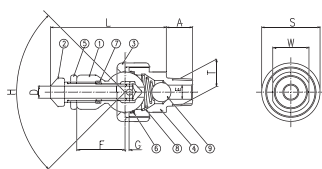


Figure number	Part name	Material
①	Ball seat	SUM
②	Flow adjustment handle and nozzle	SUM
③	Cap nut	SUM
④	Base block	SUM
⑤	Lock nut	SUM
⑥	O-ring	NBR
⑦	O-ring	NBR
⑧	Spring	SUS
⑨	Ball	Nylon

※8 and 9, there is no case of non-check.
※To handle the flow regulating nozzle and there is no stop valve function.

Short type

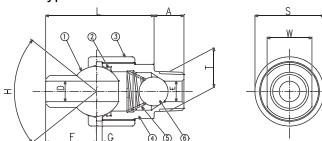


Figure number	Part name	Material
①	Ball seat	SUM
②	O-ring	NBR
③	Cap nut	SUM
④	Base block	SUM
⑤	Spring	SUS
⑥	Ball	Nylon

※5 and 6, there is no case of non-check.

Type extension pipe

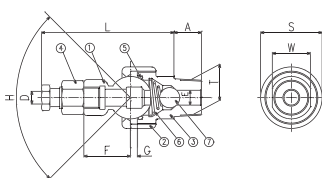


Figure number	Part name	Material
①	Ball seat	SUM
②	Cap nut	SUM
③	Base block	SUM
④	Joint	Brass
⑤	O-ring	NBR
⑥	Spring	SUS
⑦	Ball	Nylon

※6 and 7, there is no case of non-check.

Injection type fan

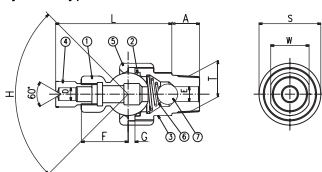


Figure number	Part name	Material
①	Ball seat	SUM
②	Cap nut	SUM
③	Base block	SUM
④	Fan nozzle tip	C3601
⑤	O-ring	NBR
⑥	Spring	SUS
⑦	Ball	Nylon

※6 and 7, there is no case of non-check.

Open type

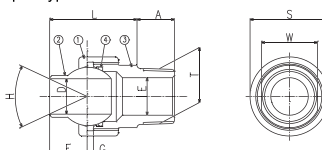


Figure number	Part name	Material
①	Cap nut	SUM
②	Ball seat	SUM
③	Base block	SUM
④	O-ring	SUM